

# **A REQUEST FOR PROPOSAL FOR PROFESSIONAL SERVICES CONTRACT**

Department of Highways  
Professional Services Procurement Bulletin 2025-12  
Oldham | 5-441.01 | US-42

This document constitutes a Request for Proposals for a Professional Service Contract from qualified individuals and organizations to furnish those services as described herein for the Commonwealth of Kentucky, Department of Highways.

## **I. PROJECT DESCRIPTION**

|                       |  |
|-----------------------|--|
| County -              | Oldham   |
| Route -               | US-42  |
| Item No. -            | 5-441.01   |
| Project Description - | Reconstruct US-42 and widen from 2 lanes to 3 lanes (3rd lane will be a center turn lane) from Jefferson/Oldham County line to Ridgemoor Drive. Project will include the consideration of improvements to the Hayfield Way intersection. |

## **II. PROJECT INFORMATION**

|                   |  |
|-------------------|--|
| Project Manager - | James Maynard, P.E.  |
| User Division -   | Highway Design   |
| Approximate Fee - | \$600,000 Final Design & Environmental Services (Lump Sum) |
| Project Funding - | STBG Funds (Federal Funds)                                 |
| Project Length -  | Approximately 0.942 miles                                  |

## **III. PURPOSE AND NEED**

The purpose of the project is to improve traffic flow, minimize congestion, and improve safety on US-42 between the Jefferson County/Oldham County line and Ridgemoor Drive. Due to an increase in commuters to and from Louisville and the development along the project corridor, the traffic volumes are expected to double in the next 20 years. The crash data for the last 3 years shows that there are between 10 and 14 rear end crashes between Hunters Ridge and Ridgemoor Drive each year. Opportunities for improved safety performance by investigating and evaluating stopping sight distance, along with other features, should be assessed.

## **IV. DBE GOAL**

The Consultant team shall include a DBE Participation Plan with their Response to Announcement to help the Department meet the 11.95% DBE goal established by FHWA. The plan should demonstrate how DBE companies will be mentored or used to assist in the area(s) pertaining to this contract. An additional page will be allowed in the Project Approach (Section 7)

to exhibit this plan. A maximum of four (4) points will be considered in the Evaluation Factors for the DBE Participation Plan.

## **V. SCOPE OF WORK**

The selected Consultant will be required to provide Final Roadway Design, including the preparation of any design studies, drainage design, construction plans, traffic control plans, and cost estimates as well as any other services that the Department chooses not to perform with in-house forces. In addition to a Final Plan submittal, the selected Consultant will be required to survey the corridor to include new developments in the area and will be required to provide Cultural-Historic environmental services to assist the Department with final environmental documents.

Phase I Design for this Project was completed in 2011 by a consultant. Phase II Design has been partially completed, including a Joint Inspection Plan submittal in 2012. Right of Way Plans were developed and Right of Way Clearance was in 2019. Utility Coordination performed by the Department is ongoing.

The selected Consultant will be provided CADD files in Inroads DGN format and will be expected to continue final design in Inroads, with minor updates and revisions to the existing design.

## **VI. SPECIAL INSTRUCTIONS**

The Department may retain any of the advertised services to be performed by in-house state forces.

Instructions for Response to Announcement can be found at:

<https://transportation.ky.gov/ProfessionalServices/Pages/Respond-to-an-Announcement.aspx>

## **VII. AVAILABLE STUDIES**

[Joint Inspection Plans – Oldham | 5-441.01 | US-42](#)

[ROW Plans – Oldham | 5-441.01 | US-42](#)

[Design Executive Summary – Oldham | 5-441.01 | US-42](#)

[CE Level 1 and RE – Oldham | 5-441.01 | US-42](#)

[Pavement Design Summary – Oldham | 5-441.01 | US-42](#)

[Drainage Design Submittal – Oldham | 5-441.01 | US-42](#)

## **VIII. METHOD OF DESIGN**

The selected Consultant will not be required to utilize the most recent CADD Standards for Highway Plans Policy in the development of the highway plans. CADD Standards V3 policy will

be utilized to accommodate the existing design in MicroStation Bentley Inroads.

#### **IX. ENVIRONMENTAL SERVICES**

The project previously developed a Categorical Exclusion Level 1 which expired in 2014. The Consultant will be responsible for Cultural-Historic Analysis. The Department will be responsible for all other environmental services and the final environmental document. Prequalification of Cultural-Historic Analysis is required to be identified in the Consultant's Response to Announcement.

#### **X. PHOTOGRAMMETRIC SERVICES**

The Department will provide topographic survey in DGN format which was obtained in approximately 2009. The selected Consultant shall supplement this information with conventional surveying as determined during project scoping.

#### **XI. STRUCTURE DESIGN**

The selected Consultant may be responsible for any necessary Structure Design services. Structure Design of the proposed structure(s) may be added as a Contract Modification. Prequalification in Structure Design is not required to be identified in the Consultant's Response to Announcement. The selected Consultant must obtain the required qualifications before providing these services or bring a prequalified subconsultant at that time.

#### **XII. GEOTECHNICAL SERVICES**

The Department will provide all Geotechnical Services required for the project.

#### **XIII. TRAFFIC ENGINEERING**

The Department is expected to provide any necessary Traffic Engineering required for the project.

Traffic Signal Design and Lighting Design services, if necessary for the completion of Final Design, may be added by Contract Modification at the appropriate time. At any time, if the Department has the capacity to provide these services, the Department may retain the advertised traffic services.

#### **XIV. UTILITIES**

The Department is responsible for providing available information on existing utility facility locations to support the determination of conflicts of the project design with the existing utility facilities. The Department shall cooperatively support the identification of these conflicts. The Consultant shall consider the practical feasibility of utility conflict avoidance, making the necessary adjustments when directed by the Department. Those conflicts determined as unavoidable shall be addressed by the entity charged with utility coordination, be it the Department or Consultant.

**XV. PREQUALIFICATION REQUIREMENTS**

To respond to this project the Consultant must be prequalified in the following areas by the response due date of this advertisement:

ENVIRONMENTAL ARCHAEOLOGY & OTHER SERVICES

- Cultural-Historic Analysis

ROADWAY DESIGN

- Rural Roadway Design
- Surveying
- Urban Roadway Design

TRANSPORTATION PLANNING

- Pedestrian & Bicycle Planning & Design

Structure Design\* (see note below)

- Standard Structures\*

Traffic Engineering\* (see note below)

- Electrical Engineering Traffic Signals\*
- Electrical Engineering Roadway Lighting\*

*Note – These prequalifications are not required with the initial proposal as it is uncertain to the extent practicable if they are necessary. Should these services become necessary during the delivery of the project in this or future phases, the selected Consultant team must obtain the required qualifications before providing those services or bring on a prequalified subconsultant at that time.*

**XVI. PROCUREMENT SCHEDULE**

Dates other than Response Date are tentative and provided for information only.

- |                            |   |
|----------------------------|---|
| • Advertisement Date:      | June 10, 2025                               |
| • Response Date:           | July 2, 2025 by 4:30 PM ET (Frankfort Time) |
| • First Selection Meeting: | July 7, 2025                                |
| • Final Selection:         | July 23, 2025                               |
| • Pre-Design Conference:   | July 30, 2025                               |
| • Consultant Fee Proposal: | August 8, 2025                              |
| • Contract Negotiations:   | August 20, 2025                             |
| • Notice to Proceed:       | September 10, 2025                          |

**XVII. PROJECT SCHEDULE**

- |  |               |
|--|---------------|
| • Local Elected Officials/Stakeholders/Public Meeting: | December 2025 |
| • Joint Inspection:                                    | March 2026    |
| • Final Roadway Plans:                                 | June 2026     |

**XVIII. EVALUATION FACTORS**

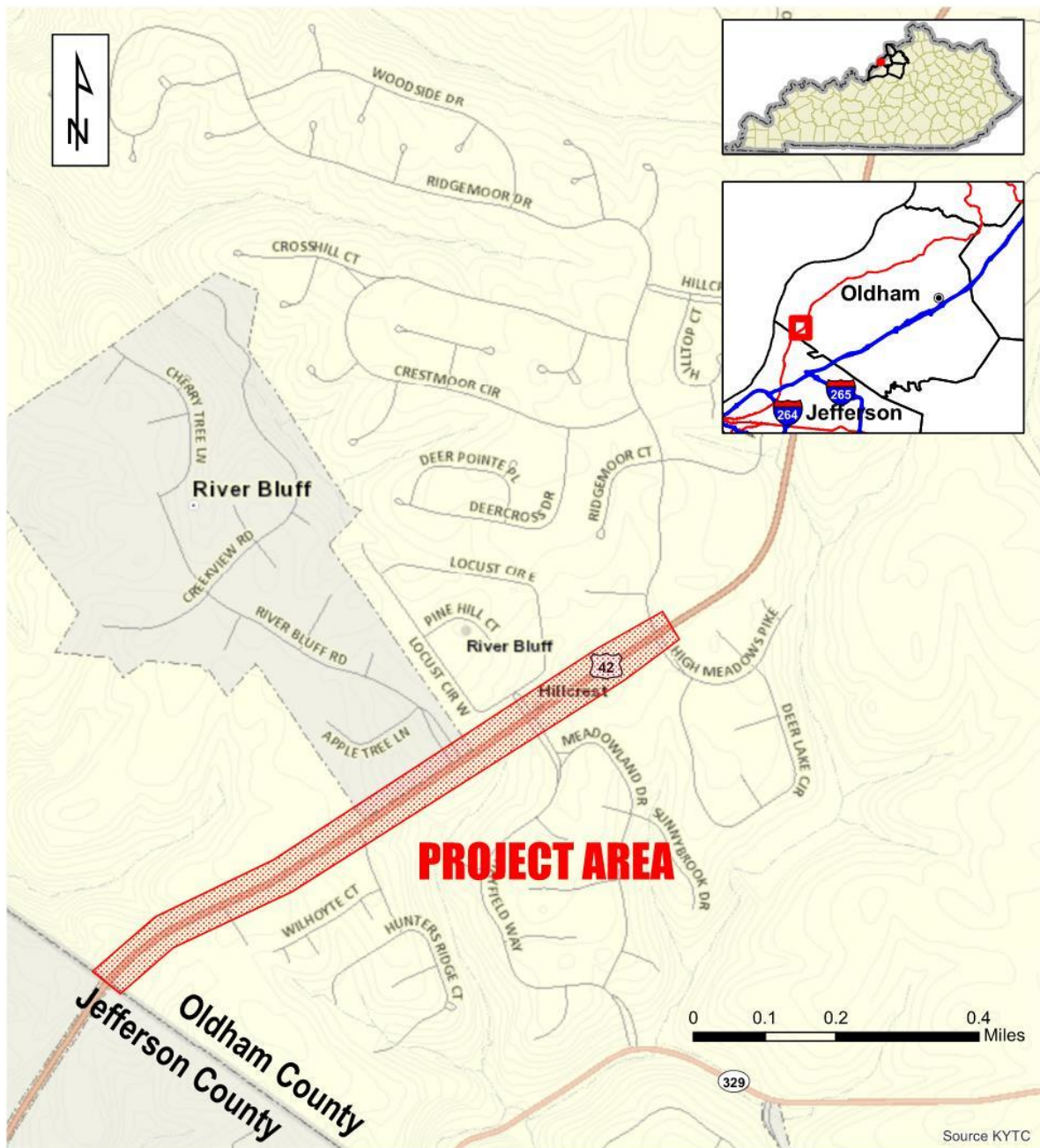
Consultants will be evaluated by the selection committee based on the following weighted factors:

1. Project approach and proposed procedures to accomplish the services for the project. (20 Points)
2. Relative experience of consultant personnel assigned to project team with highway project for KYTC and/or federal, local or other state governmental agencies. (15 Points)
3. Past record of performance on projects similar in type and complexity. (15 Points)
4. Capacity to comply with project schedule. (10 Points)
5. The Consultant demonstrates a comprehensive understanding of safety strategies and the ability to generate meaningful ideas that can measurably enhance the safety of the completed project. This includes both the immediate effectiveness and the long-term safety impacts of the finished facility. (5 Points)
6. DBE Participation Plan (4 Points)
7. Knowledge of the locality and familiarity of the general geographic area. (2 Points)

**XIX. SELECTION COMMITTEE MEMBERS**

1. James Maynard, P.E., User Division
2. Karl Sawyer, P.E., User Division
3. Crystal Mapel, P.E., Secretary's Pool
4. Amanda Desmond, P.E., Secretary's Pool
5. Marcelyn Mathews, P.E., Governor's Pool

XX. AREA MAP



**Oldham County  
Item No. 5-441.01  
US 42**

Disclaimer: KYTC provides this map as a reference only. Users are to validate information independently.  
Copyright: 2025 Kentucky Transportation Cabinet. All rights reserved.

Date: 4/21/2025